

Komi la?i?ica, kəni U?IKOD-lən la?in ?pasjas oz t?rm?n?. Unaən najə?

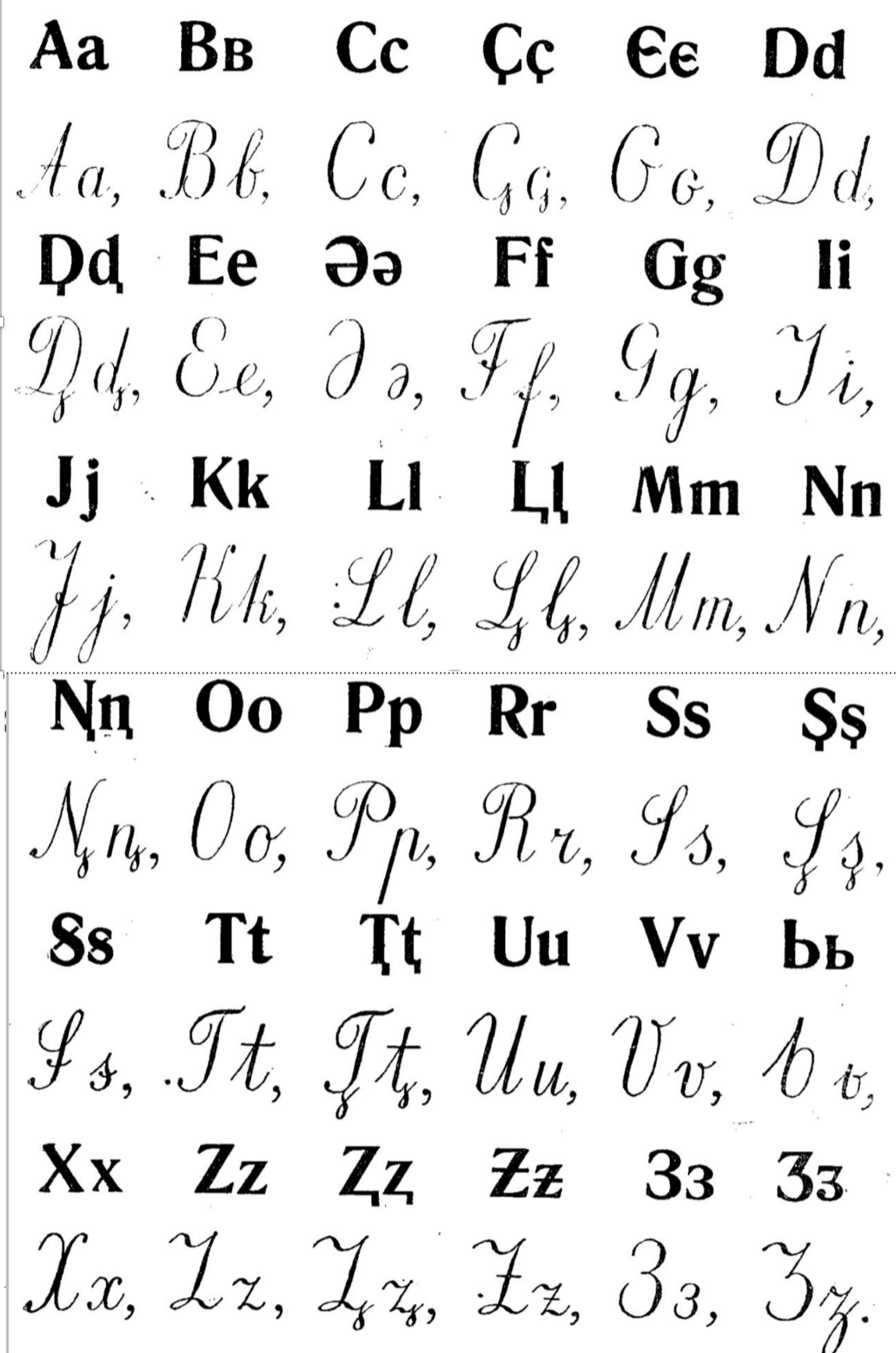
Komi Latin Letters, Degrees of UNICODE facilitation

Perem vaz anbur das ?o?əd nem?a
Old Permic Anbur fourteenth century



?kolasa ?ebəg?n ?paskud 1930
vojas?a

1930s school book presentation of alphabet

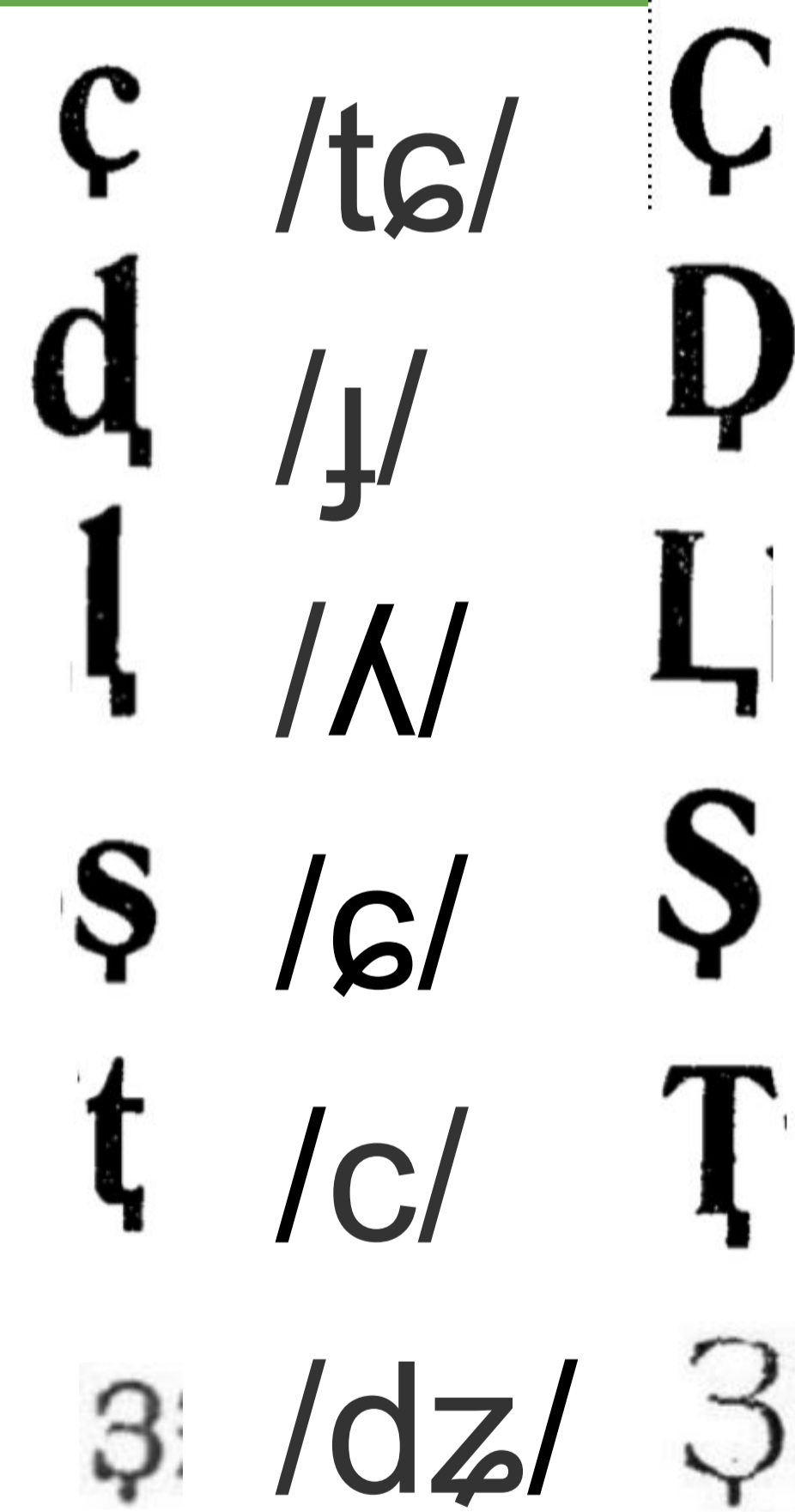


Көмі латин шыпасяс, көні УНИКОД-лөн латин шыпасяс оз тырмыны. Унаөн најө?

Көми латин шыпасьяс, көні УНИКОД-лөн латин сыпасьяс оз тырмыны. Унаөн найө?

Komi Latin Letters, Degrees of UNICODE facilitation vs transitional

La?in ?pasjas, kodjas oz pozn? petkədl?n? Unikoden Latin letters with no representation in Unicode regardless of range



K??i kolə vəli gizn?sə la?in ?pas uvti pasa
?pasjas

Ideal representation of Latin letters with descenders

	main	italic	bold
1.	Nn	<i>Nn</i>	Nn
2.	Ll	<i>Ll</i>	Ll
3.	Tt	<i>Tt</i>	Tt
4.	Dd	<i>Dd</i>	Dd
5.	Ss	<i>Ss</i>	Ss
6.	Zz	<i>Zz</i>	Zz
7.	ʒʒ	<i>ʒʒ</i>	ʒʒ
8.	Çç	<i>Çç</i>	Çç
9.	Єє	<i>Єє</i>	Єє
10.	ƷƷ	<i>ƷƷ</i>	ƷƷ
11.	Šš	<i>Šš</i>	Šš

Ь = CYRILLIC LETTER SOFT SIGN /i/

є = CYRILLIC LETTER UKRAINIAN IE /dʒ/

Ɑ = LATIN SMALL LETTER N WITH DESCENDER U+A791 /ɲ/

ʒ = LATIN SMALL LETTER Z WITH DESCENDER U+2C6C /ʒ/

Ʒ = LATIN SMALL LETTER REVERSED OPEN E U+025C /dʒ/

Ʒ = LATIN SMALL CAPITAL LETTER EZH U+1D23 /dʒ/

z = LATIN SMALL LETTER Z WITH STROKE U+01B6 /ʒ/

Аттьө FU-Lab-са да Суоми канму библиотекаса йөзлы отсөгла, UTC-лы тшөтш

Molodtsov ?pasjas 1920–1930 vojasnas
Molodtsov letters from 1920s and 1930s



<https://www.unicode.org/L2/L2019/19224-n5101-komi-latin.pdf>

Jack Rueter, University of Helsinki, Digital Humanities

jack.rueter@helsinki.fi Collaboration <https://fu-lab.ru/laboratoriya>

